

Fibonacci



Fibonacci

Fibonacci Guitars LTD
Registered Office: 20-22 Wentock Rd London N1 7GU, UK
Workshop Address: 7a Latimer Close Worcester Park Greater London KT4 8UF, UK
admin@fibonacci-guitars.com
www.fibonacciguitars.com
www.facebook.com/FibonacciGuitars/



A Boutique Of Archtop Guitars
Handmade In The United Kingdom

2024 Catalogue





A BOUTIQUE OF ARCHTOP GUITARS
HANDMADE IN THE UNITED KINGDOM



www.fibonacciguitars.com



Located in London, one of the World's most vibrant international hubs for music, FIBONACCI® GUITARS is heavily influenced by its surrounding environment. In fact, it is this environment that has been critically important in the development of new products. Our workshop is located adjacent to our independent recording studio, which ensures that new designs are exposed to a wide variety of players, and are tested in a 'real' and demanding environment for refinement, before going into production. In fact, it is the case that there are numerous recent album releases with recordings of FIBONACCI® prototype guitars 'sprinkled' all over them as part of this ongoing research and development process.

All FIBONACCI® GUITARS are 100% manufactured, assembled and hand finished in the United Kingdom by expert Artisans. All of the materials specified to produce a FIBONACCI® GUITAR, are seasoned and sourced responsibly, from local UK and European suppliers. All of the hardware products specified for use on a FIBONACCI® GUITAR are guaranteed to be genuine branded parts, produced only by authorised manufacturers.

With the greatest of respect accorded to the mathematical genius of LEONARDO FIBONACCI, the evolution of the 'GOLDEN RATIO' and all things 'PHI', other than musical scales, we do not play any 'numbers' game. The emphasis at FIBONACCI® GUITARS is on quality, not quantity as we are in the privileged position of being under no pressure to compromise on any quality dictated by CEO's, or shareholders in a far off distant land. We keep production levels low and manageable, thus ensuring quality is paramount. Our approach gives us complete control over the building, and quality of our guitars. We have the utmost confidence that what we are creating is something very special.

Our reputation means everything to us and our goal here is for you to enjoy the whole FIBONACCI® GUITAR experience, from the quality and exclusiveness of the instrument you are buying, to the excellence of the customer service you will receive from our independent Dealer network authorised to sell our products.

What you will receive when you purchase a FIBONACCI® GUITAR is a quality, completely hand-crafted instrument, manufactured, assembled and hand finished in the UK to the highest standards.

More information at www.fibonacciguitars.com





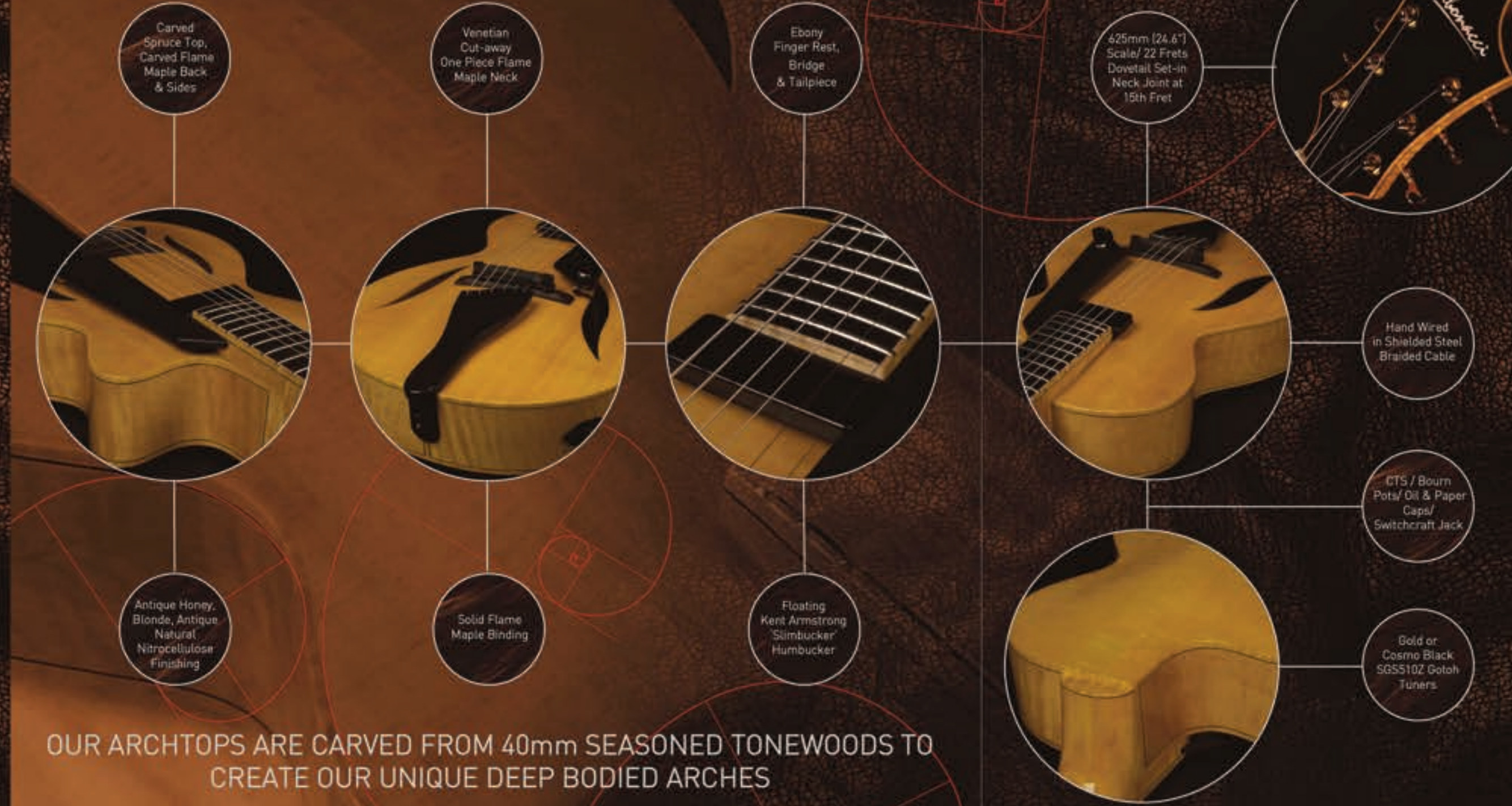
Giorgio Serci



OUR COOL CONTEMPORARY GUITAR RANGE ARE PERFECT FOR THE ASPIRING PLAYER LOOKING FOR A SMALLER BODIED ARCHTOP

www.fibonacciguitars.com

CHIQUITA



Specifications

This contemporary guitar is a compact beauty at 325mm (12.79") x 80mm (3.15"). Produced with a premium carved, 40mm, AAA solid select Carpathian spruce sound-board and carved solid Carpathian flame maple back & sides. The CHIQUITA is fitted with one piece flame maple neck and Indian ebony fingerboard, finger-rest, floating bridge & tailpiece.

This beauty is completely hand wired in shielded, steel braided cable for increased performance and stability. The hardware, which complements the CHIQUITA perfectly, is a black floating Slimbucker, Kent Armstrong humbucker, and either cosmo black or gold Gotoh SGS510Z tuners. This striking archtop produces wonderful, warm, crisp tones and is finished in natural blonde with solid maple binding and nitrocellulose lacquer. Custom finishes are available on request.

- Headstock- Fibonacci® Crescent® Crown
- Headstock Inlay- Fibonacci MDP Text
- Headstock Binding- Solid Maple
- Truss Rod Cover- Ebony or Flame Maple
- Body Style- Arched back and top, Venetian Cut-away
- Body Width at Lower Bout- 325mm (12.79")
- Body Length- 450mm, Body Depth- 80mm (3.15")
- Body Sound Board- Carved Carpathian AAA Spruce
- Body Back & Sides- Carved Carpathian AAA Flame Maple
- Body Binding- Solid Maple
- F Hole Binding- None, Nut- Bone
- Neck Profile- 43mm (1.69") at Nut, 57mm (2.24") at end Fret, "C" 14" Radius
- Neck Construction- Maple
- Neck Binding- Solid Maple
- Finger Board- Indian Ebony Fingerboard, No Inlay
- Neck Scaling- 625mm (24.6"), Dove Tail Joint at 15 F.
- Frets- 22 Jescar EVO Gold
- Bridge- Indian Ebony Floating
- Finger Rest- Indian Ebony Floating
- Tailpiece- Indian Ebony Floating
- Tuners- Cosmo Black or Gold Gotoh SGS510Z
- Pickup- Kent Armstrong 7.6k Slimbucker Floating Humbucker
- Pots- Premium CTS 500K Audio Bourn 250k Linear Sweep
- Tone/ Volume- Hand Turned Ebony Knobs
- Output Jack- Switchcraft
- Wiring- Shielded Steel Braided/ WD Oil & Paper 0.47
- Finish- Blonde, Antique Natural or Antique Honey Nitrocellulose Finish
- Strings- Thomastik Infield 11 - 48



OUR ARCHTOPS ARE CARVED FROM 40mm SEASONED TONEWOODS TO CREATE OUR UNIQUE DEEP BODIED ARCHES



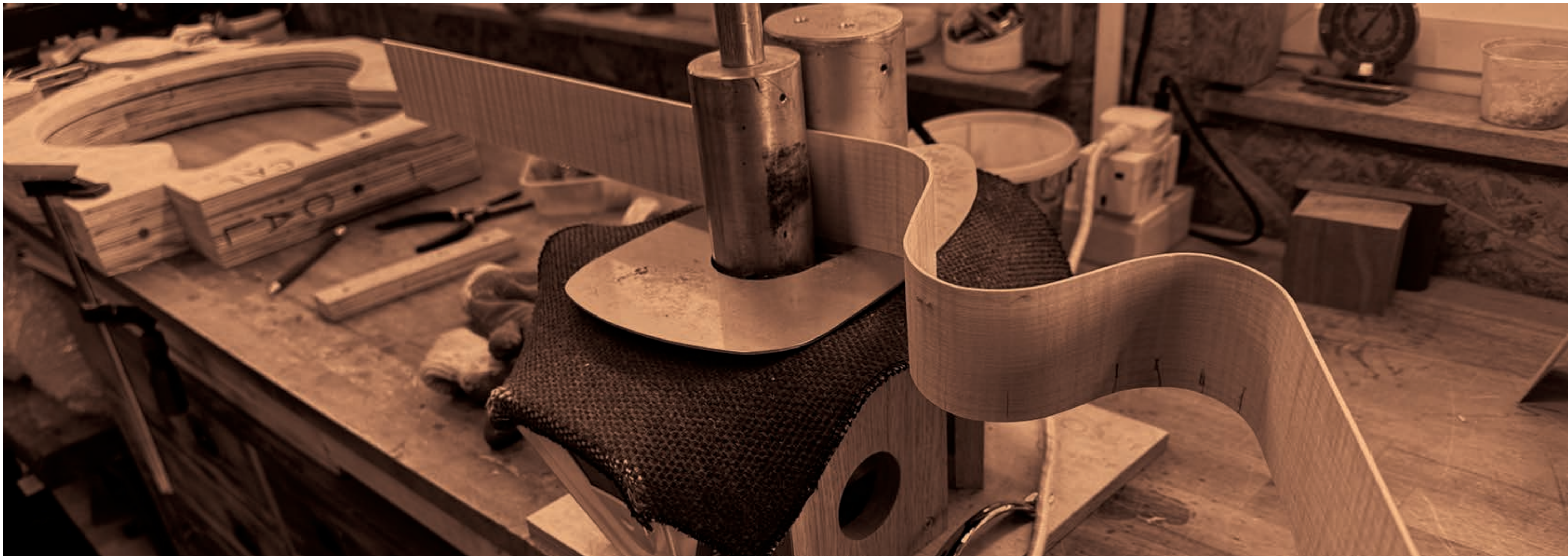
Ciyo Brown



OUR ARCHTOPS ARE ONLY FITTED WITH GENUINE
BRANDED COMPONENTS

Courtney Anglin
ARTIST

www.fibonacciguitars.com



ROMA



Compact
350mm [13.78"] x
80mm [3.15"]
Body Dimensions

Insulated
Hiscox Flight
Case

Specifications

A compact, hand carved, 350mm [13.78"] x 80mm [3.15"] contemporary archtop/ acoustic crossover guitar, which is produced with a premium, seasoned carved 40 mm AAA select Carpathian spruce sound-board and solid carved, European flamed maple back, sides & neck. Indian ebony is used for the fingerboard, finger-rest, floating bridge & tailpiece.

The ROMA can be enjoyed 'unplugged' or fitted with a LR Baggs or Bartolini floating pickup system to enhance this unique guitar's acoustics perfectly. This dynamic guitar is finished in natural blonde with nitrocellulose lacquer. Custom finishes are available on request.

- Headstock- Fibonacci® Crescent Crown
- Headstock Inlay- Fibonacci Text
- Headstock Binding- Solid Maple
- Truss Rod Cover- Ebony
- Body Style- Arched back and top, Venetian Cut-away
- Body Width at Lower Bout- 350mm [13.78"]
- Body Length- 465mm [18.31"] L. Body Depth- 80mm [3.15"]
- Body Sound Board- Carved Solid Carpathian AAA Spruce
- Body Back- Carved Solid European Flame Maple
- Body Sides- Carved Solid European Flame Maple
- Body Binding- Single Solid Maple
- F Hole Binding- N/A
- Nut- Bone
- Neck Profile- 45.48mm [1.78"] at Nut, 59.11mm [2.32"] at end Fret, 14" Radius C-Shape
- Neck Construction- European Flame Maple
- Neck Binding- Single Solid Maple
- Finger Board- Indian Ebony Fingerboard, No Inlay
- Neck Scaling- 625mm [24.6"], Dove Tail joint at 14 F
- Frets- 22 Jascar EVO Gold
- Bridge- Indian Ebony Floating
- Finger Rest- Indian Ebony Floating
- Tailpiece- Indian Ebony Floating
- Tuners- Gotoh SGSS10Z
- Pickup- Available With LR Baggs or Bartolini Floating Pickup
- Pots- Premium CTS 500K Audio Sweep if Applicable
- Tone/ Volume- If Applicable
- Output Jack- If Applicable
- Wiring- If Applicable
- Finish- Natural Nitrocellulose Finish
- Strings- Thomsatik Infield 12 - 52



OUR CONTEMPORARY STYLED ARCHTOPS ARE UNIQUE
IN THEIR DESIGN



ronnie scott's

JAZZ CLUB







Breit Lagrene



DIABLO 14

Carved Spruce Top, Carved Flame Maple Back & Sides

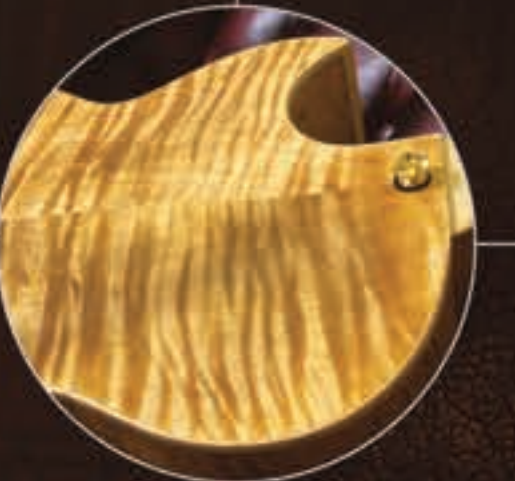
Florentine Cut-away, One Piece Flame Maple Neck

Ebony Finger Rest, Bridge & Tailpiece

WD Oil & Paper 0.33 Caps

Compact 350mm [13.78"] Body Dimensions

Insulated Hiscox Flight Case



Hand Rubbed Oil or Nitrocellulose Finishing

Solid Flame Maple Binding

Handwound Set-in OX4 or Floating Krivo Pickup

Premium CTS/ Bourns Pots Switchcraft Jack



OUR ARCHTOPS CAN BE CUSTOM FINISHED IN OIL OR NITROCELLULOSE

Specifications

The DIABLO comes in at 350mm [13.78"] produced with a carved Carpathian soundboard, and a European flame maple back & sides, one piece flame maple neck, complemented with solid flame maple binding throughout. The DIABLO is fitted with a spruce trestle centre block and comes as standard with Indian ebony fingerboard, scratch-plate, floating bridge & tailpiece.

Completely hand wired in shielded, steel braided cable for increased performance and stability, and fitted with a handwound OX4 Set-in humbucker or a floating KRIVO as standard. The DIABLO can be beautifully finished in nitrocellulose lacquer or oil. Cosmo black Gotoh S65510Z tuners, contributing to this little archtop's distinctive, contemporary vibe.

- Headstock- Fibonacci Crescent Crown
- Headstock Inlay- Fibonacci MOP Text
- Headstock Binding- Solid Maple
- Truss Rod Cover- Ebony or Flame Maple
- Body Style- Arched Back and Top, Florentine Cut-away, Trestle Centre Block
- Body Width at Lower Bout- 350mm [13.78"]
- Body Length- 465mm [18.31"]
- Body Depth- 44mm [1.73"]
- Body Sound Board- Carved AAA Carpathian Spruce
- Body Back & Sides- Carved AAA European Flame Maple
- Body Binding- Solid Maple
- F Hole Binding- N/A
- Nut- Bone
- Neck Profile- 43mm [1.69"] at Nut, 57mm [2.24"] at end Fret 'C' 12" Radius
- Neck Construction- One Piece Flame Maple
- Neck Binding- Solid Flame Maple
- Finger Board- Indian Ebony Fingerboard, No Inlay
- Neck Scaling- 630mm [24.8"], Dove Tail Joint at 15 F
- Frets- 22 Jescar EVO Gold
- Bridge- Indian Ebony Floating
- Finger Rest- Indian Ebony Floating
- Tailpiece- Indian Ebony Floating
- Tuners- Cosmo Black Gotoh S65510Z
- Pickup- OX4 Set-in or Floating KRIVO Humbucker
- Pots- Premium CTS 500K Audio 250k Linear Sweep
- Tone/ Volume- Ebony Hand Turned Knobs
- Output Jack- Switchcraft
- Wiring- Shielded Steel Braided
- Caps - WD Oil & Paper 0.33
- Finish- Nitrocellulose or Oil Finish
- Strings- Thomastik Infield 12 -52



DIABLO 15



Gareth Fowler

Carved Spruce Top, Carved Flame Maple Back & Sides

Cosmo Black SGS510Z Gotoh Tuners

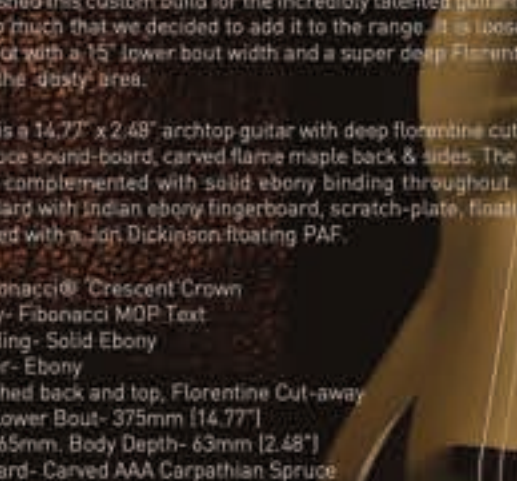
Ebony Finger Rest, Bridge & Tailpiece

628mm Scale/ 22 Frets/ Dovetail Set-in Neck Joint at 15th Fret

375mm [14.77"] x 63mm [2.48"] Body Dimensions

Deep Florentine Cut-away

Insulated Hiscox Flight Case



Choice of Colour Finished in Oil or Nitrocellulose Lacquer

Flame Maple Neck With Solid Ebony Binding

Handwound Jon Dickinson Floating PAF as Standard

Hand Wired in Shielded Steel Braided Cable

Premium CTS/Bourn Pots With Push/Pull Switch

Oil & Paper Cap Switchcraft Jack



Specifications

We recently finished this custom build for the incredibly talented guitarist Gareth Fowler. It grew on us so much that we decided to add it to the range. It is loosely based on our Diablo model, but with a 15" lower bout width and a super deep Florentine cut-away for easy access to the "dusty" area.

The DIABLO 15 is a 14.77" x 2.48" archtop guitar with deep florentine cut-away, produced with carved spruce sound-board, carved flame maple back & sides. The one-piece flame maple neck, is complemented with solid ebony binding throughout. The DIABLO 15 comes as standard with Indian ebony fingerboard, scratch-plate, floating bridge & tailpiece and is fitted with a Jon Dickinson floating PAF.

- Headstock- Fibonacci® Crescent Crown
- Headstock Inlay- Fibonacci MOP Text
- Headstock Binding- Solid Ebony
- Truss Rod Cover- Ebony
- Body Style- Arched back and top, Florentine Cut-away
- Body Width at Lower Bout- 375mm [14.77"]
- Body Length- 465mm, Body Depth- 63mm [2.48"]
- Body Sound Board- Carved AAA Carpathian Spruce
- Body Back- Carved AAA European Flame Maple
- Body Sides- Carved Flame Maple
- Body Binding- Single Ply Solid Ebony
- F Hole Binding- Ebony, Nut- Bone
- Neck Profile- 43mm [1.69"] at Nut, 57mm [2.24"] at end Fret 'C' Shape
- Neck Construction- Flame Maple
- Neck Binding- Single Ply Solid Ebony
- Fingerboard- Ebony, No Inlay
- Neck Scaling- 628mm [24.6"]; Dove Tail Joint at 15 F
- Frets- 22 Jescar EVO Gold
- Bridge- Ebony Floating
- Finger Rest- Ebony Floating
- Tailpiece- Ebony Floating
- Tuners- Cosmo Black Gotoh SGS510Z 1:21 Ratio
- Pickup- Handwound Floating, Jon Dickinson PAF as Standard
- Pots- Premium CTS 500K Audio Bourn Push/Pull Switching
- Tone/ Volume- Hand Turned Ebony Knobs
- Output Jack- Switchcraft
- Wiring- Shielded Steel Braided/ WD Oil & Paper Cap 0.33
- Finish- Oil or Nitrocellulose Finish
- Strings- Thomastic 12-48 Infield



OUR ARCHTOPS ARE DESIGNED BY GUITARISTS FOR GUITARISTS

Alban Claret



OUR ARCHTOPS ARE BUILT
TO THE HIGHEST STANDARDS

www.fibonacciguitars.com



Jason Henson



OUR ARCHTOPS ARE FINISHED IN NITROCELLULOSE LACQUER OR IN OIL.
THE CHOICE IS YOURS

www.fibonacciguitars.com



CALIFORNIAN



Specifications

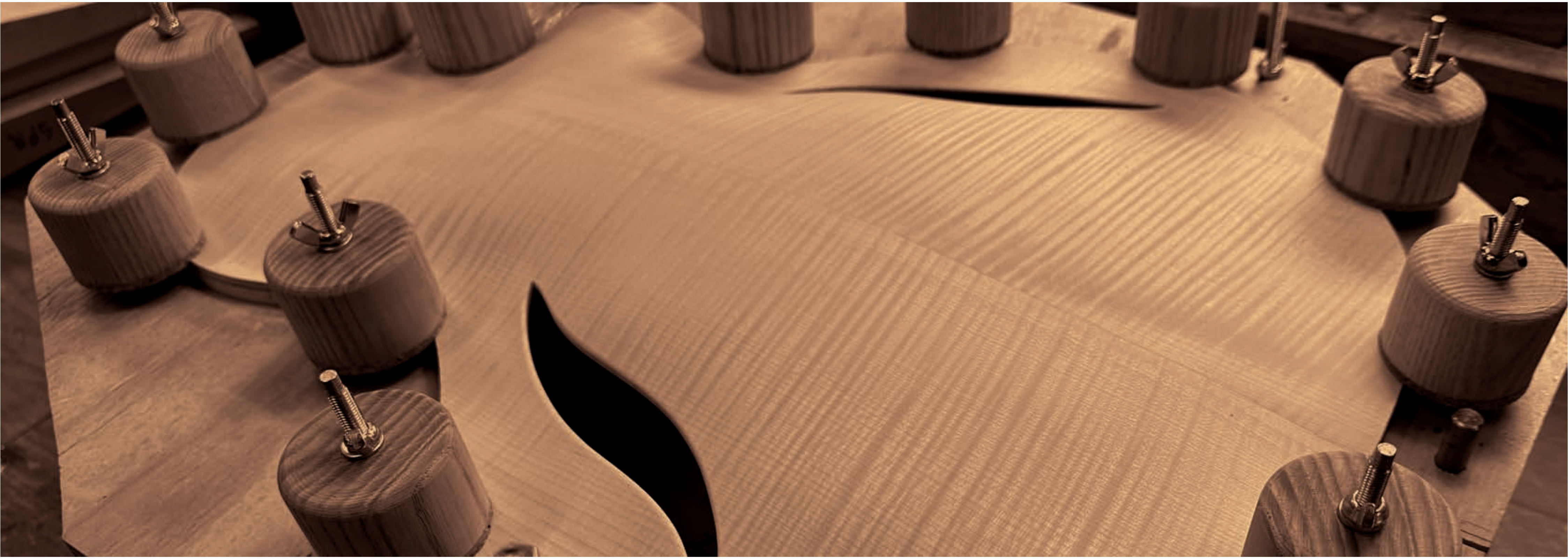
This beautifully proportioned, carved 375mm (14.77") x 63mm (2.48") archtop, consists of a premium, carved, seasoned 40mm, AAA select European flame maple sound-board, back & sides, and one piece flame maple neck. The Californian is finished with solid maple binding throughout. The fingerboard, floating bridge, finger-rest & tailpiece are all crafted in solid Indian ebony.

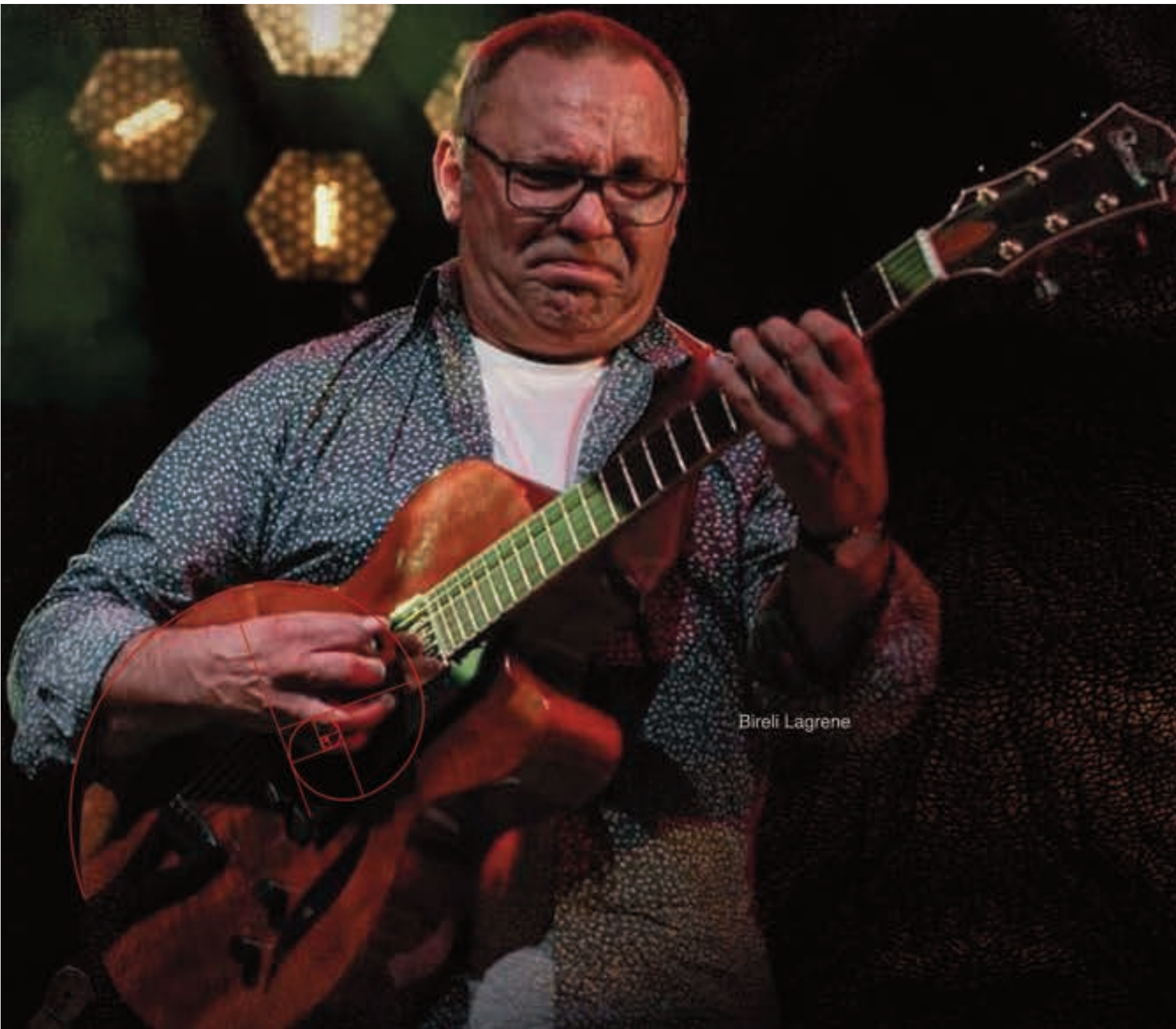
The superb acoustics are enhanced by either a handwound OX4 set-in humbucker, KA 6-Shoplet, Jon Dickinson, or KRIVO floating humbucker, all complementing this guitar's bright, rich tones. The Californian is fitted with stylish Gotoh SG5510Z tuners and finished in flamed auburn sienna sunburst with nitrocellulose lacquer or hand rubbed oil. Custom linebbs are available on request.

- Headstock- Fibonacci® Crown
- Headstock Inlay- Fibonacci MOP Text
- Headstock Binding- Solid Maple
- Truss Rod Cover- Ebony or Flame Maple
- Body Style- Arched back and top, Venetian Cut-away
- Body Width at Lower Bout- 375mm (14.77")
- Body Length- 490mm, Body Depth- 63mm (2.48")
- Body Sound Board- Carved European AAA Flame Maple
- Body Back- Carved European AAA Flame Maple
- Body Sides- Carved European AAA Flame Maple
- Body Binding- Solid Maple, F Hole Binding- None, Nut - Bone
- Neck Profile- 43mm (1.69") at Nut, 57mm (2.24") at End Fret "C", 14" Radius
- Neck Construction- Maple, Neck Binding- Solid Maple
- Finger Board- Indian Ebony Fingerboard, No Inlay
- Neck Scaling- 625mm (24.6"), Dove Tail Joint at 14 F
- Frets- 22 Jescar EVO Gold
- Bridge- Indian Ebony Floating
- Finger Rest- Indian Ebony Floating
- Tailpiece- Indian Ebony Floating
- Tuners- Gold Gotoh SG5510Z
- Pickup- Set-in OX4 Handwound or Jon Dickinson, KRIVO, Kent Armstrong Floating Humbucker
- Pots- Premium CTS 500K Audio Bourns 250K Linear Sweep
- Tone/ Volume- Hand-turned Ebony Knobs
- Output Jack- Switchcraft
- Wiring- Steel Braided/ Caps - WD Oil & Paper 0.47
- Finish- Auburn Sienna Sunburst Nitrocellulose or Oil Finish
- Strings- Thomastik Infeld 12 - 52



OUR ARCHTOPS ARE PRODUCED USING DRY-STORED SEASONED TONWOODS RESPONSIBLY SOURCED FROM LOCAL SUPPLIERS





Bireli Lagrene



OUR ARCHTOPS ARE PLAYED BY
SOME OF THE FINEST GUITARISTS IN THE WORLD

www.fibonacciguitars.com

AMBASSADOR

Carved Spruce Top, Carved Flame Maple Back & Sides

Venetian Cut-away One Piece Flame Maple Neck

Ebony Finger Rest, Bridge & Tailpiece

625mm [24.6"] Scale/ 20 Frets/ Dovetail Set-in Neck Joint at 14th Fret

Compact 15.75" x 3.15" Body Dimensions

Insulated Hiscox Flight Case



Oil or Nitrocellulose Finishing

Solid Flame Maple Binding

Floating John Dickinson, KRND or set-in OX4

Hand Wired in Shielded Steel Braided Cable

Premium CTS or Bourn Pots/ Oil & Paper Caps/ Switchcraft Jack

Gold SG5510Z Gotoh Tuners



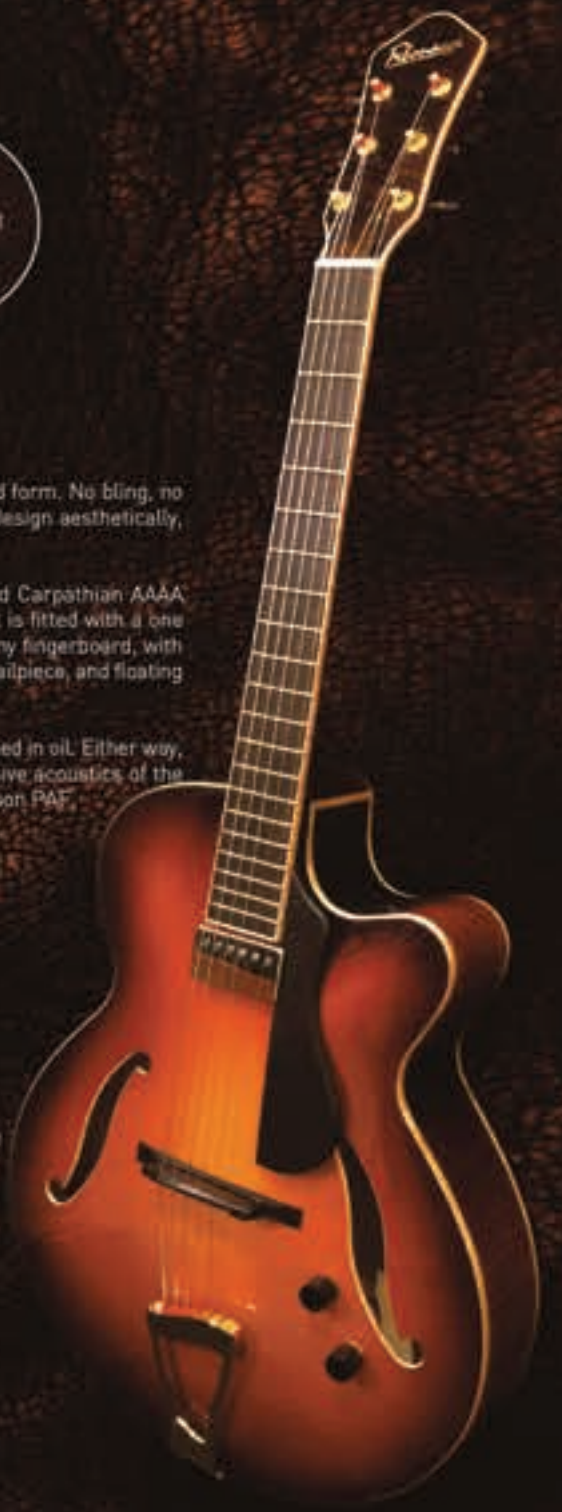
Specifications

The Ambassador is a beautiful archtop in it's simplest, most understated form. No bling, no fancy inlay on the fingerboard, no quirky headstock. Just a very simple design aesthetically, with the main focus being on its performance.

As standard, the Ambassador is formed from a parallel braced, carved Carpathian AAAA spruce top, and carved Carpathian AAAA flame maple back and sides. It is fitted with a one piece flame maple neck, dove-tail jointed at the 14th fret, 14" radius ebony fingerboard, with 20 Jescar EVO gold frets. Peripherals are hand profiled ebony finger-rest, tailpiece, and floating bridge with bone saddle.

The Ambassador can be finished in nitrocellulose lacquer or custom finished in oil. Either way, the result is perfection, retaining the natural aesthetics and the responsive acoustics of the guitar. The Ambassador comes standard fitted with a floating Jon Dickinson PAF.

- Headstock- Fibonacci Crown
- Headstock Inlay- Fibonacci Text in Abalone
- Headstock Binding- Flame Maple. Truss Rod Cover- Ebony
- Body Style- Arched back and top, Venetian Cut-away
- Body Width at Lower Bout- 400mm [15.75"]
- Body Length- 510mm [20.08"], Body Depth- 76mm [3.15"]
- Body Sound Board- Carved Carpathian AAAA Spruce
- Body Back & Sides- Carved Carpathian AAAA Flame Maple
- Body Binding- Single Solid Flame Maple.
- F Hole Binding- N/A. Nut- Bone.
- Neck Profile- 44.68mm [1.75"] at Nut, 59.11mm [2.32"] at end Fret,
- Neck Construction- One Piece Flame Maple. Neck Binding- Flame Maple
- Finger Board- Indian Ebony Fingerboard, No Inlay
- Neck Scaling- 625mm [24.6"], Dove Tail Joint at 14 F
- Frets- Jescar EVO Gold. Bridge- Indian Ebony Floating
- Finger Rest- Indian Ebony Floating.
- Tailpiece- Ebony or Gold Floating
- Tuners- Gold Gotoh SG310
- Pickup- Floating John Dickinson PAF. KRND or set-in OX4
- Pots- Premium Bourns 500K Audio / Push/Pull, 250K Linear Tone Sweep
- Tone/ Volume- Hand Turned Ebony Knobs
- Output Jack- Switchcraft
- Wiring- Shielded Steel Braided/WD Oil & Paper 0.22 Caps
- Finish- Natural or Bister Nitrocellulose.
- Strings- Thomastik Infield 12 - 52



OUR ARCHTOPS ARE HANDMADE IN THE UNITED KINGDOM BY DEDICATED EXPERT ARTISANS





OUR ARCHTOPS ARE DESIGNED & DEVELOPED
BY GUITARISTS FOR GUITARISTS

www.fibonacciguitars.com



Dr Martin Taylor MBE





LOLA

A Martin Taylor Signature

Carved Spruce Top, Carved Mahogany Back & Sides

Florentine Cut-away, One Piece Mahogany Neck

625mm (24.6") Scale/ 22 Frets/ Dovetail Set-in Neck Joint at 15th Fret

Gold Foil Signature Inlay on Tinted Flame Maple Veneer

Compact 350mm (13.78") x 56mm (2.20") Body Dimensions

Insulated Hiscox Flight Case



Gold SG5510Z Gotoh Tuners

Ebony Finger Rest, Bridge & Tailpiece

Premium Bourn Push/Pull Switching Switchcraft Jack

Gold Jon Dickinson Floating PAF

Premium CTS/Bourn Pots With Push/Pull Switch



Antique Bister Nitrocellulose Finishing

Specifications

We are thrilled to introduce you to the Martin Taylor LOLA.

This stylish carved, hand graduated archtop is the second in the range of Martin Taylor guitars produced at Fibonacci. Like the Joya, it provides all the characteristics demanded upon by a world class guitar player.

The LOLA is a compact beauty at 350mm (13.77") lower bout width x 56mm (2.2") depth. It is produced with a premium carved, hand graduated 40mm, solid select spruce sound-board, and carved solid mahogany back & sides and one piece neck. The LOLA is fitted with hand made Indian ebony finger-board, finger-rest, floating bridge & tailpiece.

The LOLA is fitted with a hand wired split pickup, Jon Dickinson PAF with switching via a Bourn push/pull tone pot. As with all Fibonacci guitars, it is completely hand wired in shielded, steel braided cable and fitted with premium components for increased performance and stability.

This contemporary looking archtop produces a crisp, dynamic acoustic punch with plenty of versatility when amplified. Finished in antique dark bister nitrocellulose lacquer.

- Headstock- Martin Taylor L-Shy Lip
- Headstock Inlay- Martin Taylor Signature Gold Foil
- Headstock Binding- Solid Flame Maple
- Truss Rod Cover- Flame Maple
- Body Style- Archtop back and top, Florentine Cut-away
- Body Width at Lower Bout- 350mm (13.78")
- Body Length- 465mm (18.31")
- Body Depth- 56mm (2.20")
- Body Sound Board- Carved Solid AAA Carpathian Spruce
- Body Back & Sides- Carved One Piece Solid Mahogany
- Body Binding- Solid Maple
- Nut- Bone
- Neck Profile- 44.68mm (1.75") at Nut, 59.11mm (2.32") at end Fret
- Neck Construction- One Piece Mahogany, Neck Binding- Solid Maple
- Finger Board- Indian Ebony, No Inlay
- Neck Scaling- 625mm (24.6"), Dove Tail Joint at 15 F
- Frets- 22 Jescar EVO Gold
- Bridge- Indian Ebony Floating
- Finger Rest- Indian Ebony Floating
- Tailpiece- Indian Ebony Floating
- Tuners- Gold Gotoh SG5510Z
- Pickup- Handwound Split Jon Dickinson Floating PAF
- Pots- Premium CTS 500K Audio Swelp, Bourn Tone Push/Pull Switching
- Output Jack- Switchcraft
- Tone/ Volume- Hand Turned Ebony Knob
- Wiring- Shielded Steel Braided
- Finish- Antique Bister Nitrocellulose
- Strings- Elixir Nanoweb Nickel Heavy (12-52) E12152

OUR ARCHTOPS ARE MADE FROM THE FINEST MATERIALS AVAILABLE ANYWHERE





JOYA
A Martin Taylor Signature

Carved Spruce Top, Carved Flame Maple Back & Sides



Ebony Finger Rest, Bridge & Tailpiece



Premium CTS Pot 500K Switchcraft Jack



Kent Armstrong Floating Pickup with Birdseye Maple Cover

625mm (24.6") Scale/ 20 Frets/ Dovetail Set-in Neck Joint at 14th Fret



Antique Honey Nitrocellulose Finishing



Gold SGS510Z Gotoh Tuners



Compact 375mm (14.77") x 80mm (3.15") Body Dimensions

Insulated Hiscox Flight Case

Specifications

Two years in development, here we have the Martin Taylor JOYA. A stylish hand carved archtop that can provide all the characteristics demanded upon it by a world class guitar player, this compact beauty comes in at 375mm (14.77") x 80mm (3.15"). The JOYA is produced with a premium carved, 40mm, AAA solid select Carpathian spruce soundboard and carved solid European flame maple back & sides. It is fitted with a flame maple neck, and the fingerboard, finger-rest, floating bridge & tailpiece are all in Indian ebony.

The Joya is completely hand wired in shielded, steel braided cable for increased performance and stability, and is fitted with a floating, Kent Armstrong "Slimbucker" humbucker. The birdseye maple pickup cover compliments the JOYA perfectly.

This contemporary looking archtop produces wonderful, warm, crisp tones and is finished in antique honey nitrocellulose lacquer.

- Headstock- Martin Taylor Lady Lip
- Headstock Inlay- Martin Taylor Signature Gold Foil
- Headstock Binding- Solid Maple
- Truss Rod Cover- Flame Maple
- Body Style- Arched back and top, Venetian Cut-away
- Body Width at Lower Bout- 375mm (14.77")
- Body Length- 490mm (19.29"), Body Depth- 80mm (3.15")
- Body Sound Board- Carved Solid AAA Carpathian Spruce
- Body Back & Sides- Carved Solid AAA European Flame Maple
- Body Binding- Solid Maple, Nut- Bone
- Neck Profile- 44.68mm (1.75") at Nut, 59.11mm (2.32") at end Fret
- Neck Construction- Maple, Neck Binding- Solid Maple
- Finger Board- Indian Ebony, No Inlay
- Neck Scaling- 625mm (24.6"), Dove Tail Joint at 14 F
- Frets- 20 Jescar EVO Gold
- Bridge- Indian Ebony Floating
- Finger Rest- Indian Ebony Floating
- Tailpiece- Indian Ebony Floating
- Tuners- Gold Gotoh SGS510Z
- Pickup- Kent Armstrong "Slimbucker", Maple Cover
- Pots- Premium CTS 500K Audio Sweep
- Output Jack- Switchcraft
- Tone/Volume- Hand Turned Ebony Knob
- Wiring- Shielded Steel Braided, Finish- Antique Honey Nitrocellulose
- Strings- Elixir Nanoweb Nickel Heavy (12-52) E12152



OUR ARCHTOPS ARE STUNNING IN THEIR DESIGN AND PERFORMANCE







Nigel Price

Ron Mison
PHOTOGRAPHY



ALL OF OUR ARCHTOPS CAN BE CUSTOM DESIGNED
TO YOUR REQUIREMENTS

www.fibonacciguitars.com

AS

LONDONER
A Nigel Price Signature



AAA Carved Flame Maple Top, Back & Sides

Venetian Cut-away One Piece Flame Maple Neck

637mm Scale/ 22 Frets/ Dovetail Set-in Neck Joint at 15th Fret



Gold SGS510Z Gotoh Tuners With Ebony Buttons

Ebony Finger Rest & Bridge With AVR II Saddle

Premium CTS Pots 500K, Switchcraft Jack, Floating Tailpiece

Floating Jon Dickinson Handwound PAF

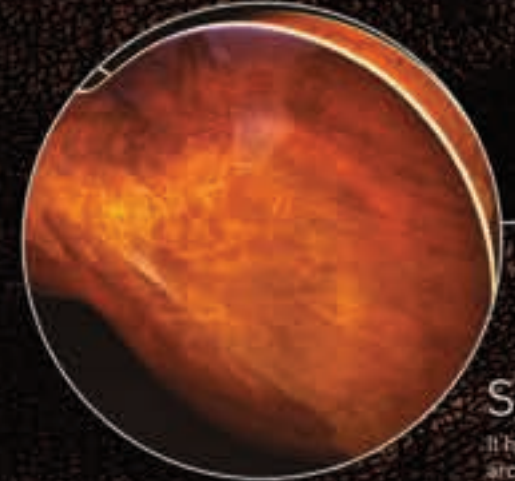


Solid Flame Maple Binding

Bister Sunburst Nitrocellulose Finishing



THE BUILD QUALITY OF OUR ARCHTOPS IS ROBUST TO SATISFY THE HARDEST WORKING PLAYERS



431mm [16.97"] x 56mm [2.20"] Body Dimensions

Insulated Hiscox Flight Case

Specifications

It has been great working with award winning jazz guitarist Nigel Price, to produce this stunning archtop. Nigel's specifications, has contributed something very special to our range of guitars.

Appropriately named, 'The Londoner', is produced with a premium carved, AAA Carpathian flamed maple top, back & sides, 431mm [16.97"] lower bout width, 56mm [2.20"] deep, one piece flame maple neck with ebony fingerboard, 22 frets, 637mm [25.07"] scaling, and floating ebony Gotoh AVR II bridge. The Londoner is complimented throughout with ebony peripherals.

The Londoner is completely hand wired in shielded, steel braided cable for increased performance and stability, and is fitted with a handwound floating PAF, developed by Nigel and Jon Dickinson.

Gotoh SGS305 tuners, and gold hardware, sprayed in a stunning bister nitrocellulose, with solid flame maple binding throughout, complement this stunning guitar perfectly.

- Headstock- Fibonacci® Crescent Crown
- Headstock Inlay- Fibonacci® MOP, Nigel Price Gold Foil Signature
- Headstock Binding- Solid Maple
- Truss Rod Cover- Ebony
- Body Style- Arched back and top, Venetian Cut-away
- Body Width at Lower Bout- 431mm [16.97"]
- Body Length- 527mm [20.75"] Body Depth- 56mm [2.20"]
- Body Sound Board- Carved Solid Carpathian AAA Flame Maple
- Body Back & Sides- Carved Solid Carpathian Flame Maple
- Body Binding- Solid Flame Maple, F Hole Binding- None, Nut- Bone
- Neck Profile- 44.68mm [1.75"] at Nut, 59.11mm [2.32"] at end Fret, "C" 14" Radius
- Neck Construction- Maple, Neck Binding- Solid Maple
- Finger Board- Indian Ebony, MOP Block Inlay
- Neck Scaling- 637mm [25.07"], Dove Tail Joint at 15 F
- Frets- 22 Medium Jescar EVO Gold
- Bridge- Indian Ebony Floating with Gotoh AVR II Saddle
- Finger Rest- Indian Ebony Floating
- Tailpiece- Indian Ebony Floating
- Tuners- Gold Gotoh SGS510Z
- Pickup- Jon Dickinson Handwound Floating PAF
- Pots- Premium CTS 500K Audio Sweep, Bourn Push/Pull Switching
- Output Jack- Switchcraft
- Tone/ Volume- Hand Turned Ebony Knob
- Wiring- Shielded Steel Braided
- Finish- Bister Sunburst Nitrocellulose Finish
- Strings- Thomastik Infield 13-52 Heavy





WE OFFER A COMPREHENSIVE RANGE OF ARCHTOPS
TO SUIT A VARIETY OF PLAYERS

www.fibonacciguitars.com



Alessio Menconi

Alessio Menconi

ALESSIO
Alessio Menconi Signature



Carved Carpathian Spruce Top, Carved Flame Maple Back & Sides



Ebony Finger Rest, Bridge, Trapeze Tailpiece



DeArmond Dynasonic Pickup

625mm (24.6") Scale/ 20 Frets/ Dovetail Set-in Neck Joint at 15th Fret



Venetian Cut-away, One Piece Maple Neck

Gold Foil Signature Inlay on Tinted Flame Maple Veneer



Deep Body 400mm (15.75") x 80mm (3.15") Body Dimensions

Insulated Hiscox Flight Case



Gold SGS510Z Gotoh Tuners

Premium CTS/Bourn Pots With 0.22 Cap



Cherry Sunburst Vintage Nitrocellulose Finishing

Specifications

Two years in development, we are now very pleased to unveil 'ALESSIO', our latest Signature by award-winning guitarist, Alessio Menconi.

The ALESSIO is a compact size at 400mm (15.75") x 80mm (3.15"), but the extra deep arches carved from 40mm tonewood wedges, give it a BIG sound. It is produced with a premium carved, AAA solid select Carpathian spruce sound board, and carved solid European flame maple back & sides; it is fitted with one piece flame maple neck, and the fingerboard, finger-rest, floating bridge are all in Indian ebony.

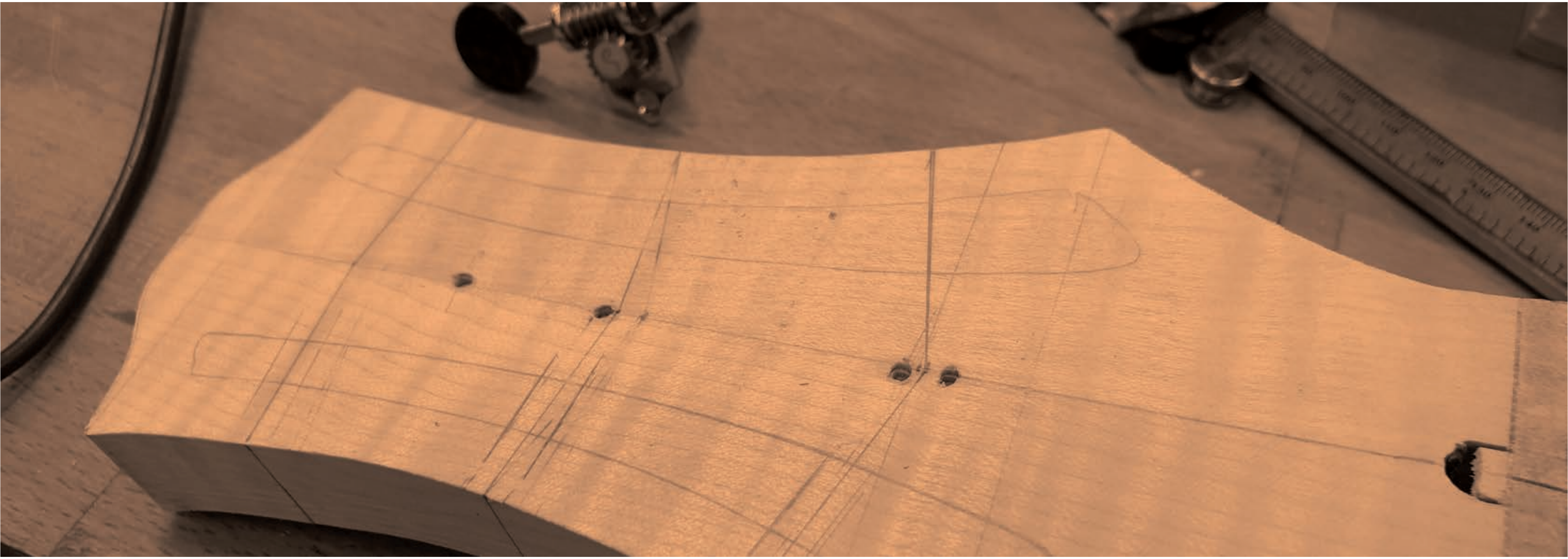
Even with its contemporary flare, this beautiful carved archtop embraces all the characteristics from a vintage era, which includes checked nitrocellulose lacquer and DeArmond Dynasonic pickup.

- Headstock- FIBONACCI "CRESCENT" Style
- Headstock Inlay- FIBONACCI® 'ALESSIO MENCONI' Signature
- Truss Rod Cover- Flame Maple
- Body Style- Arched back and top, Venetian Cut-away
- Body Width at Lower Bout- 400mm (15.75")
- Body Length- 510mm (20.08") Body Depth- 80mm (3.15")
- Body Sound Board- Carved Solid AAA Carpathian Spruce
- Body Back & Sides- Carved Solid AAA European Flame Maple
- Body Binding- Solid Maple, Nut- Bone
- Neck Profile- 43.5mm (1.71") at Nut, 57mm (2.24") at end Fret
- Neck Construction- One Piece Maple
- Neck Binding- Solid Flame Maple
- Finger Board- Indian Ebony, MDP Dot Inlay
- Neck Scaling- 625mm (24.6"), Dove-Tail Joint at 15 Fret
- Frets- 20 Jescar EVO Gold
- Bridge- Indian Ebony Floating
- Finger Rest- Indian Ebony Floating
- Tailpiece- Floating Gold Trapeze
- Tuners- Gold Gotoh SGS510Z
- Pickup- DeArmond Dynasonic
- Pots- Premium CTS 1000K Audio Sweep, Bourns Linear 250k, 0.22 Cap
- Output Jack- Switchcraft
- Tone/ Volume- Hand Turned Ebony Knob
- Wiring- Shielded Steel Braided.
- Finish- Cherry Sunburst Vintage Nitrocellulose
- Strings- Thomastik Infield [13-52]



OUR ARCHTOPS ARE PLAYED BY SOME OF THE
FINEST PLAYERS IN THE WORLD





MASTERBUILD CHIQUITA NYLON STRING

Carved
AAAAA European
Flame Maple Top,
Back
& Sides

Venetian
Cut-away
One Piece Flame
Maple Neck

Custom
Flame Maple
Finger Rest,
Bridge
& Tailpiece

585mm
[23.0"] Scale/
20 Frets/
Dovetail Set-in
Neck Joint at
12th Fret

Compact
325mm [12.79"]
x 80mm [3.15"]
Body Dimensions

Insulated
Hiscox Flight
Case

Hand Wired
in Shielded Steel
Braided Cable

Custom
Slotted
Headstock

Schaller
Grand Tune
Machine Heads

Oil or
Nitrocellulose
Finishing

Solid Flame Maple
Binding

LR Baggs
Pickup System

Specifications

CUSTOM NYLON STRING CHIQUITA MASTERBUILD- HAND CARVED AAAAA CARPATHIAN SPRUCE TOP, HAND CARVED AAAAA EUROPEAN FLAME MAPLE BACK & SIDES, CUSTOM OIL FINISH

This beautiful custom Masterbuild Chiquita consists of 20 frets, 12th fret neck joint, short scale, nylon strung, oil finished using the best AAAAA premium materials throughout.

This Chiquita has a modified tailpiece, custom made arm rest and pickguard using flame maple, body is fitted with a LR Baggs Lyr Pickup. Please email us if you would like your very own custom Masterbuild Chiquita.

Headstock- Fibonacci Slotted Lady-lip
Headstock Binding- Flame Maple, Truss Rod Cover- Ebony
Body Style- Archtop back and top, Venetian Cut-away
Body Width at Lower Bout- 325mm [12.79"]
Body Length- 450mm, Body Depth- 80mm [3.15"]
Body Sound Board- Carved Carpathian AAAAA Spruce
Body Back & Sides- Carved Carpathian AAAAA Flame Maple
Body Binding- Solid Flame Maple
F Hole Binding- None, Nut- Bone
Neck Profile- 43mm [1.69"] at Nut, 57mm [2.24"] at end Fret, "C" 14" Radius
Neck Construction- One Piece Flame Maple
Neck Binding- Solid Flame Maple
Finger Board- Indian Ebony Fingerboard, No Inlay
Neck Scaling- 585mm [23.0"], Dove Tail Joint at 12 Frets, 20 Jescar EVO Gold
Bridge- Indian Ebony Floating
Finger Rest- Floating Flame Maple
Tailpiece- Custom Ebony
Tuners- Schaller Grand Tune
Pickup- LR Baggs Internal
Pots- LR Baggs Pre-amp
Tone/Volume- LR Baggs
Output Jack- LR Baggs
Finish- Natural Oil
Strings- Rotosound Nylon

OUR ARCHTOPS CAN BE CUSTOM MADE
TO YOUR SPECIFICATIONS

MASTERBUILD AMBASSADOR

Carved
AAAAA European
Flame Maple Top,
Back
& Sides



Oil or
Nitrocellulose
Finishing

Venetian
Cut-away
One Piece Flame
Maple Neck



Solid Flame Maple
Binding

Custom Ebony
Finger Rest,
Bridge
& Tailpiece



KK Internal
Pickup System

625mm
(24.6") Scale/
20 Frets/
Dovetail Set-in
Neck Joint at
14th Fret



Hand Wired
in Shielded Steel
Braided Cable

Custom
Slotted
Headstock

Schaller
Grand Tune
Machine Heads



Compact
15.75" x 3.15"
Body Dimensions

Insulated
Hiscox Flight
Case

Specifications

CUSTOM MASTERBUILD AMBASSADOR - HAND CARVED
AAAAA EUROPEAN FLAME MAPLE TOP, BACK & SIDES,
CUSTOM SLOTTED HEADSTOCK FINISHED IN FLAT
NITROCELLULOSE BISTER

This particular Masterbuild Ambassador was created with
a flatter shoulder, with an extra wide "D" shape neck,
51mm at nut, 61mm at 14th fret, and slotted "Lady Lip"
headstock design. Internal pickup system is by KK with
discreet controls located inside the F-hole.
Built using premium AAAAA materials throughout.

Stunning bister flat nitrocellulose finish. A very special
archtop that looks as good as it sounds. Contact us if
you would like your very own custom
Masterbuild archtop to your specific:

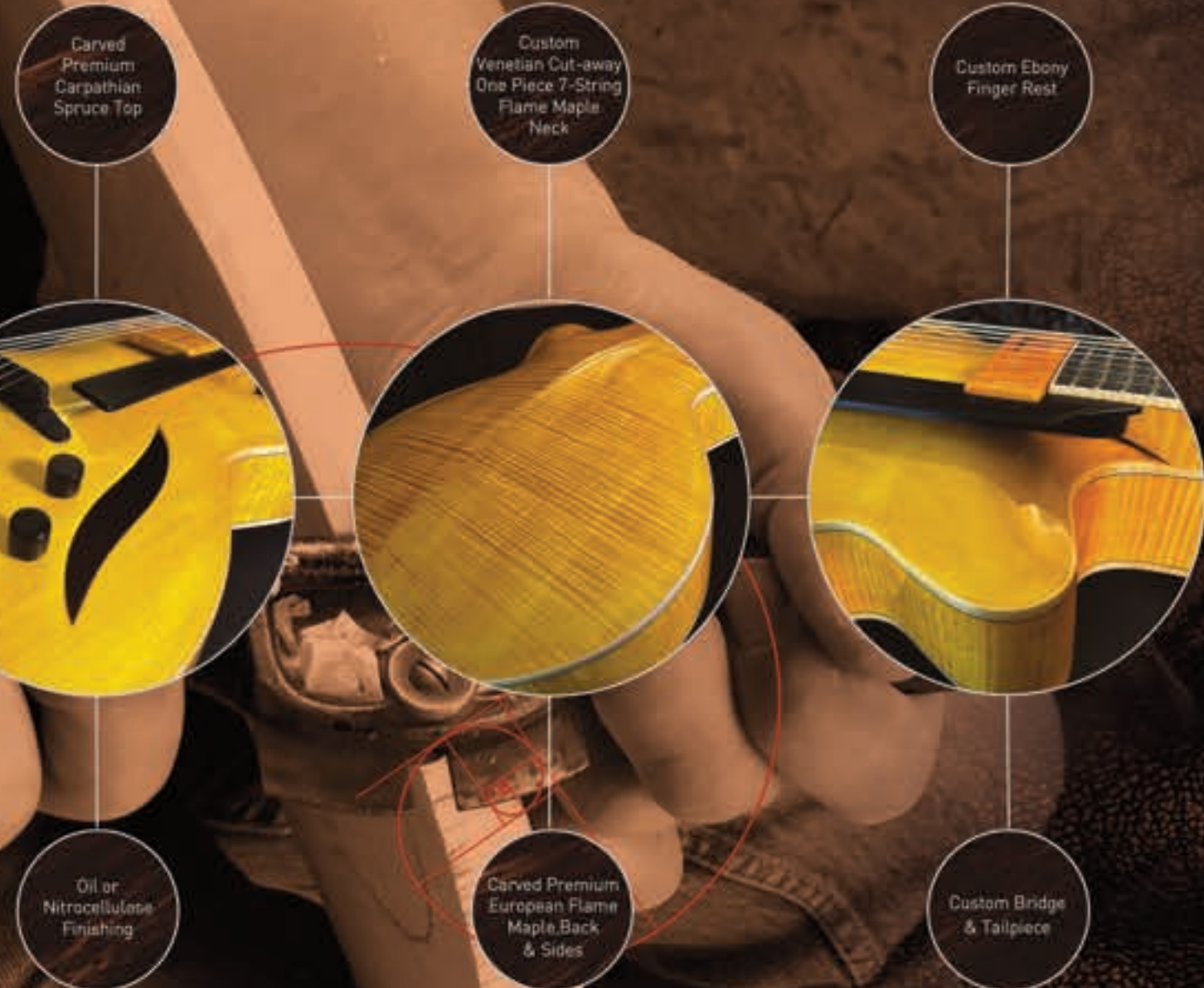
- Headstock - Fibropacel Slotted Lady-lip
- Headstock Inlay -
- Headstock Binding - Flame Maple, Truss Rod Cover - Ebony
- Body Style - Arched back and top, Venetian Cut-away
- Body Width at Lower Bout - 400mm (15.75")
- Body Length - 510mm (20.08"), Body Depth - 76mm (3.15")
- Body Sound Board, Back & Sides - Carved European AAAAA Flame Maple
- Body Binding - Single Solid Flame Maple
- F Hole Binding - Flame Maple, Nut - Bone
- Neck Profile - 44.68mm (1.75") at Nut, 59.11mm (2.32") at end Fret,
- Neck Construction - One Piece Flame Maple, Neck Binding - Flame Maple
- Finger Board - Indian Ebony Fingerboard, No Inlay
- Neck Scalloping - 625mm (24.6"), Dove Tail Joint at 14 F
- Frets - Jescar EVO Gold, Bridge - Custom Indian Ebony Floating
- Finger Rest - Indian Ebony Floating
- Tailpiece - Custom Ebony
- Tuners - Schaller Grand Tune
- Pickup - KK Internal
- Pots - External via Pre-amp
- Tone/Volume - N/A
- Output Jack - KK
- Finish - Natural or Bister Nitrocellulose
- Strings - Thomastik Infeld 12 - 52



OUR ARCHTOPS CAN BE CUSTOM MADE
TO YOUR SPECIFICATIONS



MASTERBUILD 7-STRING AMBASSADOR



OUR ARCHTOPS CAN BE CUSTOM MADE TO YOUR SPECIFICATIONS



Specifications

CUSTOM MASTERBUILD 7-STRING AMBASSADOR - HAND CARVED AAAAA CARPATHIAN TOP, EUROPEAN FLAME MAPLE BACK & SIDES, CUSTOM 7-STRING HEADSTOCK FINISHED IN LEMON NITROCELLULOSE

This particular Masterbuild Ambassador was created an wider 51mm at nut, 61mm at end fret, to accomodate 7-strings. Fitted with a custom 7-string Jon Dickinson floating PAF with custom made maple cover.

Finished in a stunning lemon nitrocellulose finish. A very special archtop that looks as good as it sounds. Contact us if you would like your very own custom Masterbuild archtop to your specific.

- Headstock- Fibonacci 7-String Custom Crescent
- Headstock Inlay- Fibonacci MOF Inlay
- Headstock Binding- Flame Maple
- Truss Rod Cover- Ebony
- Body Style- Arched back and top, Venetian Cut-away
- Body Width at Lower Bout- 400mm (15.75")
- Body Length- 510mm (20.08")
- Body Depth- 76mm (3.15")
- Body Sound Board- Carved Carpathian AAAAA Spruce
- Body Back & Sides- Carved European AAAAA Flame Maple
- Body Binding- Single Solid Flame Maple
- F Hole Binding- Flame Maple, Nut- Bone
- Neck Profile- 51mm (1.75") at Nut, 61mm (2.32") at end Fret
- Neck Construction- One Piece Flame Maple
- Neck Binding- Flame Maple
- Finger Board- Indian Ebony Fingerboard, No Inlay
- Neck Scaling- 625mm (24.6"), Dove Tail Joint at 14 Frets
- Frets- Jescar EVG Gold, Bridge- Custom Indian Ebony Floating
- Finger Rest- Indian Ebony Floating
- Tailpiece- Custom Ebony
- Tuners- Gotoh Tuners
- Pickup- Custom 7-String Jon Dickinson PAF
- Pots- Bourns 500k Vol/Tone Push/Pull Switch
- Output Jack- Switchcraft
- Finish- Lemon Nitrocellulose
- Strings- Thomastik Infield 12 - 52







Andrea Rinciari



OUR GUITARS ARE PERFECT FOR THE PLAYER LOOKING FOR INSPIRATION FROM A HIGH QUALITY ARCHTOP

www.fibonacciguitars.com

ACCESSORIES

Hand-Wound
Humbuckers From
OX4



Set-in OX4 Split
Humbucker
7.6k

Hand-Wound
Humbuckers
From
Jon Dickinson



Jon Dickinson
Split Floating
PAF 7.4k

Hand Made
Birdseye Maple
Floating
Pickup Covers



Floating
KRIVO Pickups
7.6k

Hand Made
Fully Earthen
Floating Ebony
Tailpieces



Premium
Padded
3" Cowhide
Strap



ALL OF OUR COMPONENTS ARE AVAILABLE FOR
PURCHASE INDIVIDUALLY





The Fibonacci Brothers
Pizza Express, London





FIBONACCI GUITARS SPECIFICATIONS AT A GLANCE

MODEL	STANDARD PICKUP	LOWER BOUT SIZE	BODY LENGTH	BODY DEPTH SIZE	BODY TOP MATERIAL	BODY BACK MATERIAL	NECK/BODY						FINGERBOARD RADIUS	FRETTS	NUT WIDTH	END FRET WIDTH	1ST FRET DEPTH	9TH FRET DEPTH	SCALE LENGTH	NECK JOINT	NUT TO NECK JOINT FRET	
							SIDE MATERIAL	NECK MATERIAL	F HOLE BINDING	FRONT OF HEADSTOCK	NECK PROFILE	FINGERBOARD										
CHIQUITA	KENT ARMSTRONG SLIMBUCKER	325mm (12.79")	445mm (17.52")	80mm (3.15")	CARVED SPRUCE AAA	CARVED FLAME MAPLE AAA	CARVED FLAME MAPLE AAA	FLAME MAPLE	NO	FLAME MAPLE	FLAME MAPLE	C	AAA EBONY NO INLAY	30.48mm (12")	22	43mm (1.69")	57mm (2.24")	21.5mm (0.84")	23.5mm (0.92")	625mm (24.6")	15 Feet	362.27mm (14.28")
ROMA	LR BAGS ANTHEM	350mm (13.78")	465mm (18.31")	80mm (3.15")	CARVED SPRUCE AAA	CARVED FLAME MAPLE AAA	CARVED FLAME MAPLE AAA	FLAME MAPLE	NO	FLAME MAPLE	FLAME MAPLE	C	AAA EBONY NO INLAY	35.56mm (14")	22	44.68mm (1.75")	59.11mm (2.32")	21.5mm (0.84")	23.5mm (0.92")	625mm (24.6")	14 Feet	346.59mm (13.64")
DIABLO 14 (TRESTLE CENTRE BLOCK)	SET-IN ODM	350mm (13.78")	465mm (18.31")	44mm (1.73")	CARVED SPRUCE AAA	CARVED FLAME MAPLE AAA	CARVED FLAME MAPLE AAA	FLAME MAPLE	NO	FLAME MAPLE	FLAME MAPLE	C	AAA EBONY NO INLAY	30.48mm (12")	22	43mm (1.69")	57mm (2.24")	21.5mm (0.84")	23.5mm (0.92")	630mm (24.8")	15 Feet	365.11mm (14.37")
DIABLO 15	JON DICKINSON	370mm (14.77")	490mm (19.29")	63mm (2.48")	CARVED SPRUCE AAAA	CARVED FLAME MAPLE	CARVED FLAME MAPLE AAAAA	FLAME MAPLE	NO	EBONY	EBONY	C	AAA EBONY NO INLAY	30.48mm (12")	22	43mm (1.69")	57mm (2.24")	21.5mm (0.84")	23.5mm (0.92")	630mm (24.8")	15 Feet	365.11mm (14.37")
CALIFORNIAN	KENT ARMSTRONG SLIMBUCKER	325mm (12.77")	490mm (19.29")	64mm (2.48")	CARVED FLAME MAPLE AAA	CARVED FLAME MAPLE AAA	CARVED FLAME MAPLE AAA	FLAME MAPLE	NO	FLAME MAPLE	FLAME MAPLE	C	AAA EBONY NO INLAY	30.48mm (12")	22	43mm (1.69")	57mm (2.24")	21.5mm (0.84")	23.5mm (0.92")	625mm (24.6")	14 Feet	346.59mm (13.64")
AMBASSADOR	JON DICKINSON	400mm (15.75")	510mm (20.08")	80mm (3.15")	CARVED SPRUCE AAA	CARVED FLAME MAPLE AAA	CARVED FLAME MAPLE AAA	FLAME MAPLE	NO	FLAME MAPLE	FLAME MAPLE	C	AAA EBONY NO INLAY	35.56mm (14")	20	44.68mm (1.75")	59.11mm (2.32")	21.5mm (0.84")	23.5mm (0.92")	625mm (24.6")	14 Feet	346.59mm (13.64")
FIBONACCI	NUVO	400mm (15.75")	480mm (18.88")	56mm (2.20")	CARVED SPRUCE AAA	CARVED MAHOAGANY	CARVED MAHOAGANY	MAHOAGANY	NO	FLAME MAPLE	FLAME MAPLE	C	AAA EBONY NO INLAY	30.48mm (12")	22	43mm (1.69")	57mm (2.24")	21.5mm (0.84")	23.5mm (0.92")	630mm (24.8")	17 Feet	393.39mm (15.48")
SIGNATURES																						
NIGEL PRICE LONDONER	JON DICKINSON	411mm (16.92")	523mm (20.75")	56mm (2.20")	CARVED FLAME MAPLE AAA	CARVED FLAME MAPLE AAA	CARVED FLAME MAPLE	FLAME MAPLE	NO	FLAME MAPLE	FLAME MAPLE	C	AAA EBONY MOP BLOCK INLAY	35.56mm (14")	22	44.68mm (1.75")	59.11mm (2.32")	21.5mm (0.84")	23.5mm (0.92")	635mm (25.0")	15 Feet	368.01mm (14.48")
MARTIN TAYLOR JOYA	KENT ARMSTRONG SLIMBUCKER	325mm (12.77")	490mm (19.29")	80mm (3.15")	CARVED SPRUCE AAA	CARVED FLAME MAPLE AAA	CARVED FLAME MAPLE AAA	FLAME MAPLE	NO	FLAME MAPLE	FLAME MAPLE	C	AAA EBONY NO INLAY	35.56mm (14")	20	44.68mm (1.75")	59.11mm (2.32")	21.5mm (0.84")	23.5mm (0.92")	625mm (24.6")	14 Feet	346.59mm (13.64")
MARTIN TAYLOR LOLA	JON DICKINSON	350mm (13.78")	465mm (18.31")	56mm (2.20")	CARVED SPRUCE AAA	CARVED MAHOAGANY	CARVED MAHOAGANY	MAHOAGANY	NO	FLAME MAPLE	FLAME MAPLE	C	AAA EBONY NO INLAY	35.56mm (14")	22	44.68mm (1.75")	59.11mm (2.32")	21.5mm (0.84")	23.5mm (0.92")	625mm (24.6")	15 Feet	362.27mm (14.28")
ALESSIO MENCONI	SET-IN DEARMOND DYNASONIC	400mm (15.75")	510mm (20.08")	80mm (3.15")	CARVED SPRUCE AAA	CARVED FLAME MAPLE AAA	CARVED FLAME MAPLE AAA	FLAME MAPLE	NO	FLAME MAPLE	FLAME MAPLE	C	AAA EBONY NO INLAY	30.48mm (12")	20	43.5mm (1.71")	57mm (2.24")	21.5mm (0.84")	23.5mm (0.92")	625mm (24.6")	15 Feet	346.59mm (13.64")
CUSTOM MASTERBUILDS (BUILD TO ORDER ONLY)																						
FLAT SHOULDER AMBASSADOR SLOTTED HEADSTOCK	XX	400mm (15.75")	510mm (20.08")	80mm (3.15")	CARVED SPRUCE AAAAA	CARVED FLAME MAPLE	CARVED FLAME MAPLE AAAAA	FLAME MAPLE	NO	FLAME MAPLE	FLAME MAPLE	C	AAA EBONY NO INLAY	35.56mm (14")	20	44.68mm (1.75")	59.11mm (2.32")	21.5mm (0.84")	23.5mm (0.92")	625mm (24.6")	14 Feet	346.59mm (13.64")
7-STRING AMBASSADOR	JON DICKINSON	400mm (15.75")	510mm (20.08")	80mm (3.15")	CARVED SPRUCE AAAAA	CARVED FLAME MAPLE	CARVED FLAME MAPLE AAAAA	FLAME MAPLE	NO	FLAME MAPLE	FLAME MAPLE	C	AAA EBONY NO INLAY	35.56mm (14")	20	51mm (2.00")	57mm (2.24")	21.5mm (0.84")	23.5mm (0.92")	625mm (24.6")	14 Feet	346.59mm (13.64")
CHIQUITA NYLON	LR BAGS	325mm (12.79")	445mm (17.52")	80mm (3.15")	CARVED SPRUCE AAA	CARVED FLAME MAPLE AAA	CARVED FLAME MAPLE AAA	FLAME MAPLE	NO	FLAME MAPLE	FLAME MAPLE	C	AAA EBONY NO INLAY	30.48mm (12")	20	43mm (1.69")	57mm (2.24")	21.5mm (0.84")	23.5mm (0.92")	585mm (23.0")	12 Feet	362.27mm (14.28")

Fibonacci
 Fibonacci Guitars LTD
 Registered Office: 20-22 Wenlock Rd London N1 7GU, UK
 Workshop Address: 7a Latimer Close Worcester Park Greater London KT4 8UF, UK
 FIBONACCI® is a Registered Trade Mark
 admin@fibonacci-guitars.com
 www.fibonacci-guitars.com
 www.facebook.com/FibonacciGuitars/

